



# GMT MONTHLY MEMBERSHIP PROGRESS REPORT

Results as of: 6/30/2020

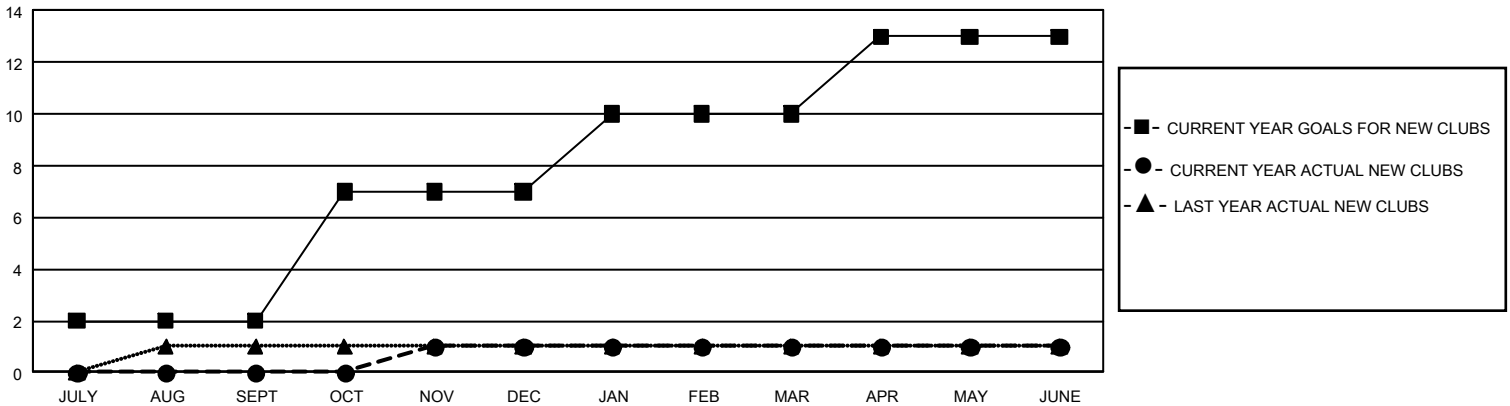
## GMT Constitutional Area 1, Group G

GMT: OPEN

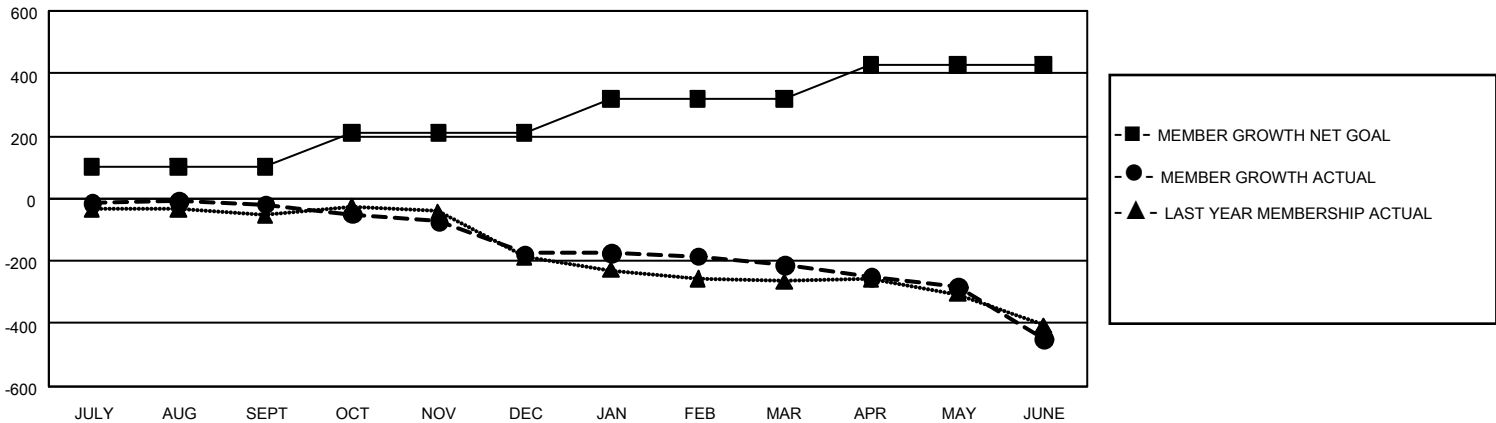
REPORT DOES NOT INCLUDE CLUBS IN UNDISTRICTED AREAS.

Clubs				Members			
RESULTS FOR 2019-2020				RESULTS FOR 2019-2020			
QUARTER	NEW CLUB GOAL	NEW CLUBS	DROPPED CLUBS	QUARTER	MEMBER GROWTH NET GOAL	MEMBER GROWTH ACTUAL	DROPPED MEMBERS ACTUAL (including transfers)
JULY/AUG/SEPT	6	0	1	JULY/AUG/SEPT	303	179	169
OCT/NOV/DEC	15	1	4	OCT/NOV/DEC	324	179	317
JAN/FEB/MAR	9	0	0	JAN/FEB/MAR	333	175	191
APR/MAY/JUNE	9	0	1	APR/MAY/JUNE	321	68	295

**GOALS AND ACTUAL NEW CLUBS CUMULATIVE**



**GOALS AND ACTUAL MEMBERS CUMULATIVE**



DROPPED CLUBS: 6	186 CLUBS OF 363 ADDED 1 OR MORE NEW MEMBERS	<b>GENDER DISTRIBUTION</b> MALE 6,084 (70.69%) FEMALE 2,522 (29.31%)
<b>DROPPED MEMBERS</b> DECEASED 133 CLUB CANCELLED 39 OTHER 800 <hr/> TOTAL 972	<a href="#">CLICK HERE FOR CUMULATIVE MEMBERSHIP DATA</a>	TOTAL FAMILY UNIT MEMBERS 1,763 FAMILY MEMBERS PAYING HALF DUES 896